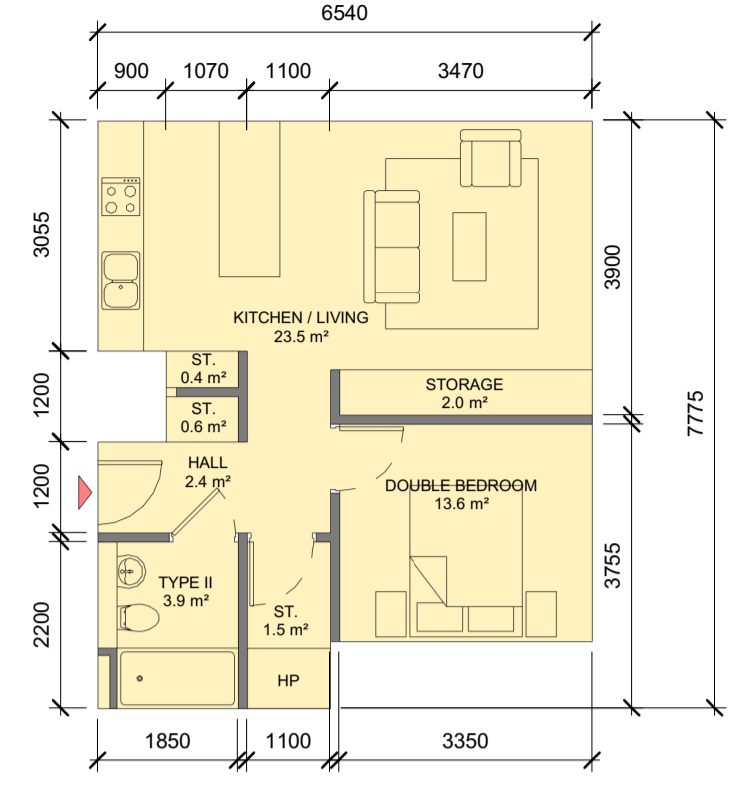


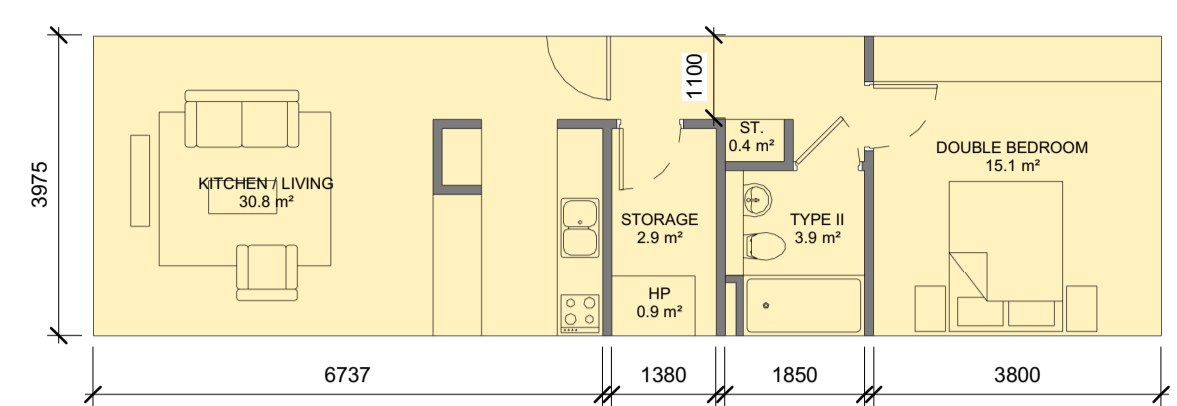
45.8 m²

C-1B-I	
Name	Area
DOUBLE BEDROOM	12.4 m ²
KITCHEN / LIVING	23.6 m ²
ST.	0.9 m ²
ST.	0.4 m ²
STORAGE	2.1 m ²
TYPE II	3.9 m ²



46.7 m²

C-1B-II	
Name	Area
DOUBLE BEDROOM	13.6 m ²
HALL	2.4 m ²
HALL	29.0 m ²
KITCHEN / LIVING	23.5 m ²
ST.	1.5 m ²
ST.	0.4 m ²
ST.	0.6 m ²
STORAGE	2.0 m ²
TYPE II	3.9 m ²



56.2 m²

C-1B-III	
Name	Area
DOUBLE BEDROOM	15.1 m ²
KITCHEN / LIVING	30.8 m ²
ST.	0.4 m ²
STORAGE	2.9 m ²
TYPE II	3.9 m ²

NOTE:
 This drawing only shows internal floor space, balconies are shown on general arrangement plans and areas depicted on HQA

C-1B-I - SPACE REQUIREMENTS											
Apartment Area	Required Apartment Area	Required Area Met	Kitchen - Living Area	Required Kitchen - Living Area	Required Area Met	Total Bedroom Area	Required Total Bedroom Area	Required Area Met	Total Storage Area	Required Total Storage Area	Required Area Met
45.8 m ²	45.0 m ²	Yes	23.6 m ²	23.0 m ²	Yes	12.4 m ²	11.4 m ²	Yes	3.4 m ²	3.0 m ²	Yes

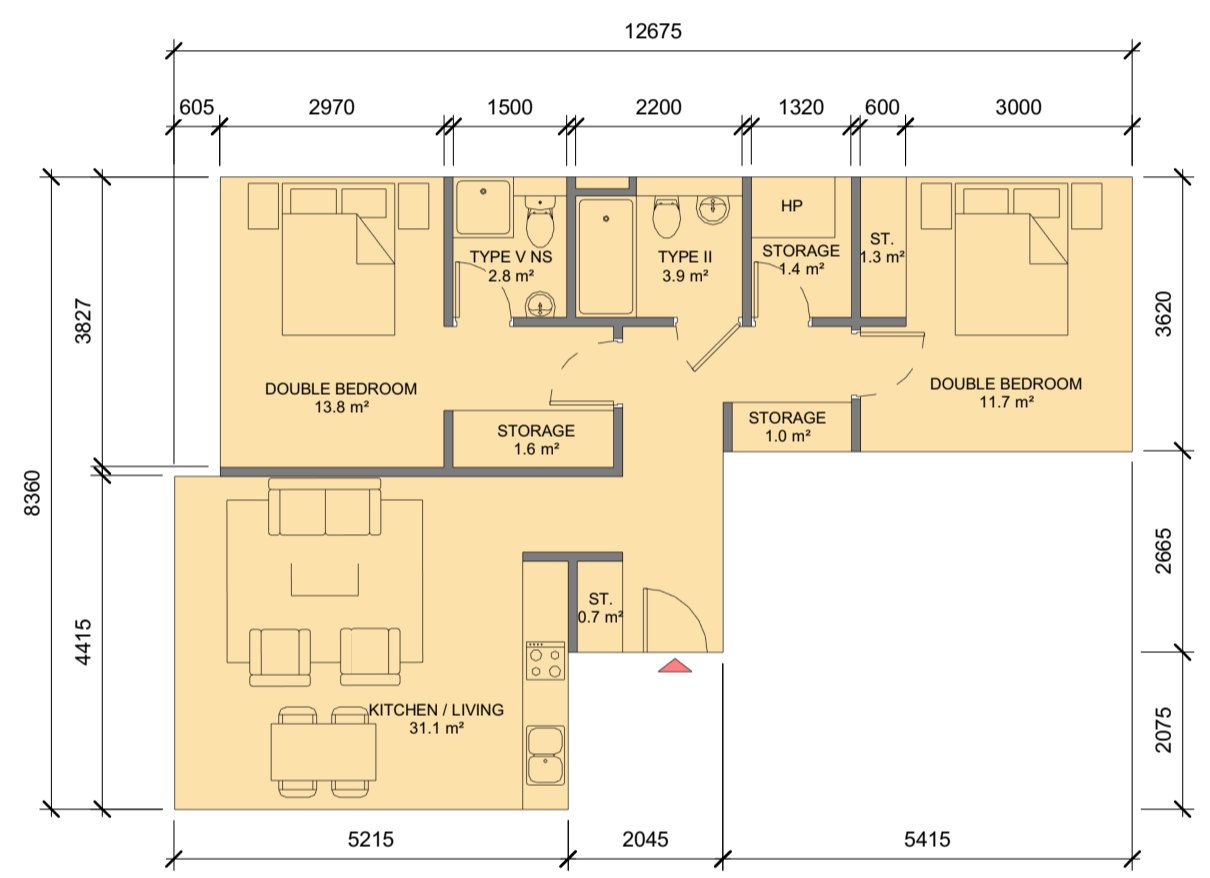
4 C-1B-I
1:100

C-1B-II - SPACE REQUIREMENTS											
Apartment Area	Required Apartment Area	Required Area Met	Kitchen - Living Area	Required Kitchen - Living Area	Required Area Met	Total Bedroom Area	Required Total Bedroom Area	Required Area Met	Total Storage Area	Required Total Storage Area	Required Area Met
46.7 m ²	45.0 m ²	Yes	23.5 m ²	23.0 m ²	Yes	13.6 m ²	11.4 m ²	Yes	4.5 m ²	3.0 m ²	Yes

5 C-1B-II
1:100

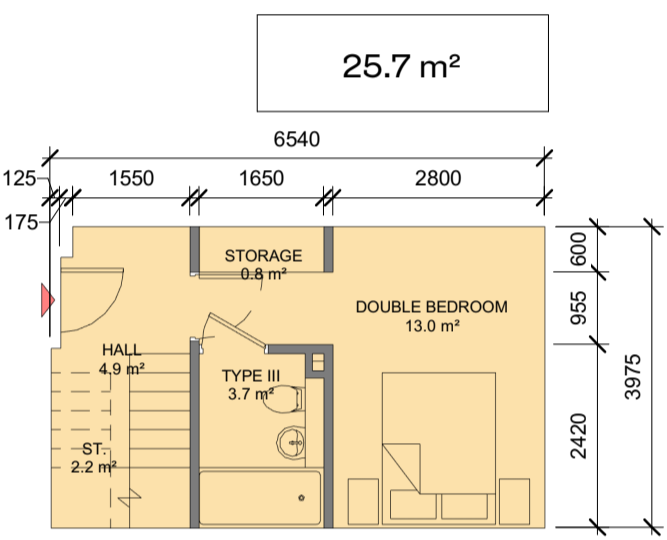
C-1B-III - SPACE REQUIREMENTS											
Apartment Area	Required Apartment Area	Required Area Met	Kitchen - Living Area	Required Kitchen - Living Area	Required Area Met	Total Bedroom Area	Required Total Bedroom Area	Required Area Met	Total Storage Area	Required Total Storage Area	Required Area Met
56.2 m ²	45.0 m ²	Yes	30.8 m ²	23.0 m ²	Yes	15.1 m ²	11.4 m ²	Yes	3.3 m ²	3.0 m ²	Yes

1 C-1B-III
1:100



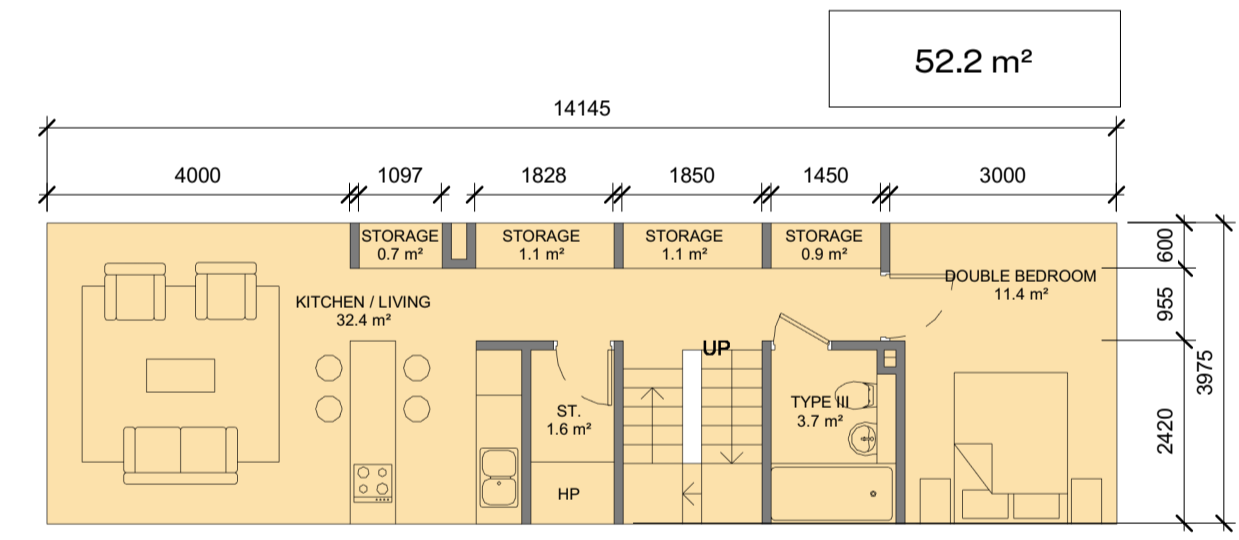
73.7 m²

C-2B-I	
Name	Area
DOUBLE BEDROOM	13.8 m ²
DOUBLE BEDROOM	11.7 m ²
KITCHEN / LIVING	31.1 m ²
ST.	1.3 m ²
ST.	0.7 m ²
STORAGE	1.4 m ²
STORAGE	1.6 m ²
STORAGE	1.0 m ²
TYPE V NS	2.8 m ²
TYPE II	3.9 m ²
TYPE V NS	2.8 m ²



25.7 m²

C-2B-DX	
WT	Area
DOUBLE BEDROOM	11.4 m ²
DOUBLE BEDROOM	13.0 m ²
HALL	4.9 m ²
KITCHEN / LIVING	32.4 m ²
ST.	1.6 m ²
ST.	2.2 m ²
STORAGE	0.7 m ²
STORAGE	1.1 m ²
STORAGE	1.1 m ²
STORAGE	0.9 m ²
STORAGE	0.8 m ²
TYPE III	3.7 m ²
TYPE III	3.7 m ²



52.2 m²

C-2B-I - SPACE REQUIREMENTS											
Apartment Area	Required Apartment Area	Required Area Met	Kitchen - Living Area	Required Kitchen - Living Area	Required Area Met	Total Bedroom Area	Required Total Bedroom Area	Required Area Met	Total Storage Area	Required Total Storage Area	Required Area Met
73.7 m ²	73.0 m ²	Yes	31.1 m ²	30.0 m ²	Yes	25.5 m ²	24.4 m ²	Yes	6.0 m ²	6.0 m ²	Yes

6 C-2B-I
1:100

C-2B-DX - SPACE REQUIREMENTS											
Apartment Area	Required Apartment Area	Required Area Met	Kitchen - Living Area	Required Kitchen - Living Area	Required Area Met	Total Bedroom Area	Required Total Bedroom Area	Required Area Met	Total Storage Area	Required Total Storage Area	Required Area Met
77.9 m ²	73.0 m ²	Yes	32.4 m ²	30.0 m ²	Yes	24.4 m ²	24.4 m ²	Yes	8.4 m ²	6.0 m ²	Yes

8 C-2B-DX
1:100

REV	DATE	DESCRIPTION	CHK	DRN
A2	15.11.2019	ISSUED FOR PLANNING APPROVAL	RJ	HJL
A1	18.07.2019	ISSUED FOR ABP PRE-APPLICATION	RJ	BM

STATUS CODE DESCRIPTION
ISSUED FOR PLANNING APPROVAL

CLIENT
 SANDYFORD GP Ltd.

PROJECT
 SANDYFORD CENTRAL

DRAWING
 PROPOSED APARTMENTS BLOCK C

PROJECT NUMBER 950572	DATE 18/07/2019
SCALE@ A1: 1:100	DRAWN/CHECKED: SR/SR

REVISION	DRAWING NUMBER	STATUS CODE:
A2	SFC-HJL-XX-ZZ-DR-A-8102	A1

Henry J Lyons